



MONTHLY MEMBERSHIP PROGRESS REPORT

Results as of: 4/30/2015

Multiple District 24

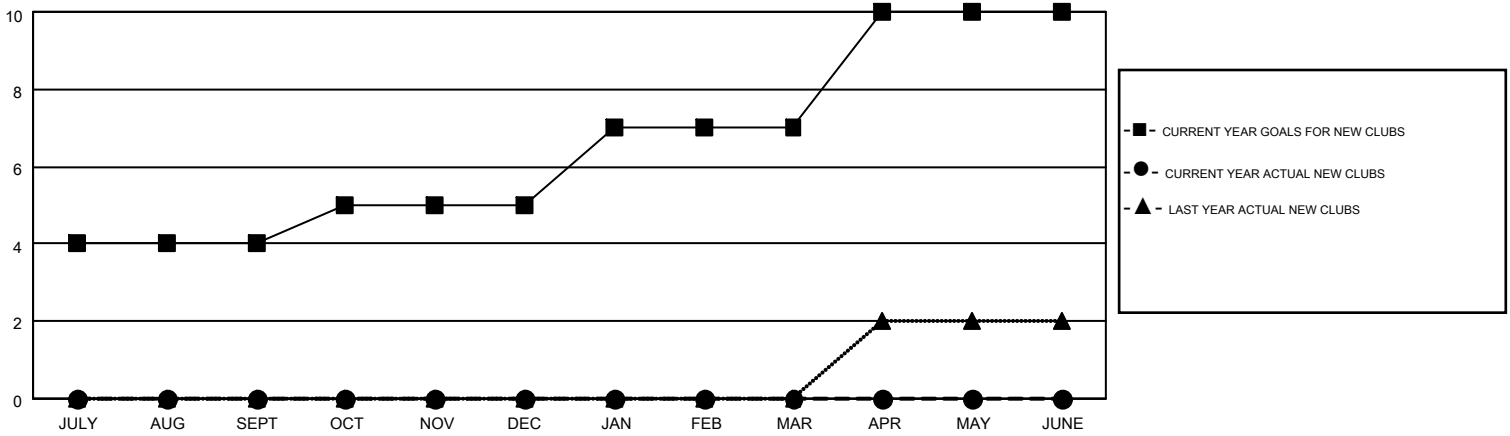
LOCATION: VIRGINIA

GMT: JERRY SMITH

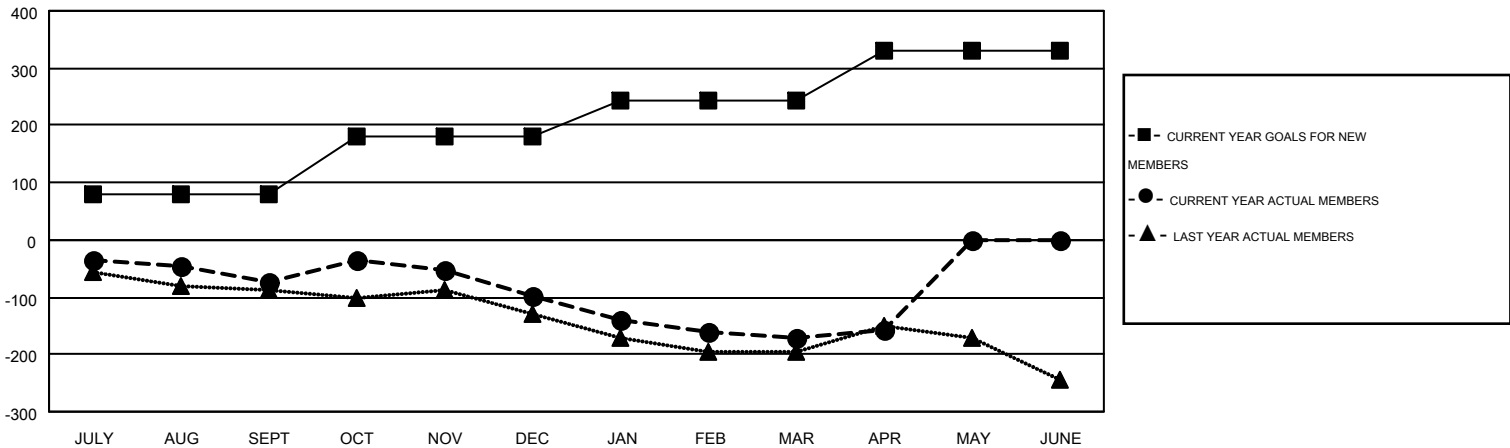
GMT CA 1

| Clubs | | | | | Members | | | | |
|-----------------------|---------------|-----------|---------------|---------------|-----------------------|-----------------|-------------------------------|-----------------|---------------|
| RESULTS FOR 2014-2015 | | | | | RESULTS FOR 2014-2015 | | | | |
| QUARTER | NEW CLUB GOAL | NEW CLUBS | DROPPED CLUBS | NET GAIN/LOSS | QUARTER | NEW MEMBER GOAL | CHARTER AND NEW MEMBERS ADDED | DROPPED MEMBERS | NET GAIN/LOSS |
| JULY/AUG/SEPT | 4 | 0 | 2 | -2 | JULY/AUG/SEPT | 81 | 148 | 221 | -73 |
| OCT/NOV/DEC | 1 | 0 | 2 | -2 | OCT/NOV/DEC | 100 | 169 | 193 | -24 |
| JAN/FEB/MAR | 2 | 0 | 0 | 0 | JAN/FEB/MAR | 62 | 122 | 195 | -73 |
| APR/MAY/JUNE | 3 | 0 | 0 | 0 | APR/MAY/JUNE | 87 | 71 | 57 | 14 |

GOALS AND ACTUAL NEW CLUBS CUMULATIVE



GOALS AND ACTUAL MEMBERS CUMULATIVE



| | | | |
|------------------------|--|---|----------------|
| DROPPED CLUBS: 4 | 172 CLUBS OF 282 ADDED 1 OR MORE NEW MEMBERS | <u>GENDER DISTRIBUTION</u> | |
| | | MALE | 5,201 (71.72%) |
| <u>DROPPED MEMBERS</u> | | FEMALE | 2,051 (28.28%) |
| DECEASED | 110 | CLICK HERE FOR HEALTH ASSESSMENT DATA | |
| CLUB CANCELLED | 31 | | |
| OTHER | 525 | | |
| TOTAL | 666 | FAMILY UNIT MEMBERS | 1,133 |
| | | HEAD OF HOUSEHOLD | 556 |
| | | NON-HEAD OF HOUSEHOLD | 577 |